

Compact-Pressure Switch

Series 9000

Mechanical pressure switch in piston design with 30 x 30 x 92 mm front face and precise switching point setting

Features

- High-quality materials
- 100% functional test
- Compact design
- Long pressure spring (precisely adjustable)
- G1/4" female thread
- Set screw captive

Adjustment ranges

- 2 ... 400 bar

Applications

- OEM applications
- Mobil- and industrial hydraulics
- Test bed and apparatus engineering
- Heavy industry
- Shipbuilding



Technical Data

Wetted parts ¹⁾	sealing: PTFE /FKM / EPDM / NBR diaphragm: NBR fitting: AlMg4,5Mn piston: steel (100Cr6)
Repeatability	±2% (typically)
Switching rate	max. 60/mim
Temperature range storage piston switch diaphragm switch	-40 °C ... +80 °C (-40 °F ... +176 °F) -20 °C ... +80 °C (-4 °F ... +176 °F) -10 °C ... +80 °C (14 °F ... +176 °F)
Protection class	IP65
Housing standard optional	Aluminium Stainless steel 1.4305 / AISI 303, Version - VA
Process connection	G1/4" female thread DIN ISO 228-1

Electrical connection	EN 175301-8013-A plug (formerly DIN 43650)
Weight	175 g (0.39 lbs)
Micro switch	(SPDT) silver contacts
Set screw standard optional	Aluminium Stainless steel 1.4305 / AISI 303 (SW5), capitve
Approvals	BV, DNV

¹⁾ Suitable media: All common hydraulic oils and fluid greases, and, with restrictions, aqueous media or gases. For more information, see operating manual.

Pressure Ranges and Proof Pressures

Pressure range code	Adjustment range (Increasing pressure)	Adjustment range (Decreasing Pressure)	Max. hysteresis at full range max %	Max. operating pressure	Proof pressure (short term)
[bar]	[bar]	[bar]		[bar]	[bar]
02	2 ... 16	1.5 ... 14	≤ 18%	40	60
03	3 ... 30	1.5 ... 27	≤ 10%	40	60
1	10 ... 50	6 ... 44	≤ 18%	250	300
2	20 ... 200	15 ... 185	≤ 10%	250	300
3	40 ... 400	35 ... 360	≤ 10%	500	600

Process Connection / Electrical Connection / Seal

Process Connection	Electrical Connection	Seal
(2) G1/4" IG DIN ISO 228-1	(PL1) Plug, 4-pin acc. to EN 175301-803-A	(V) FKM
(3)* G1/4" IG DIN ISO 228-1 with 2 mounting holes (Ø 5,5mm / 20mm distance)		(B) NBR
(4)* Flange connection, housing only in VA (SS)		(E) EPDM

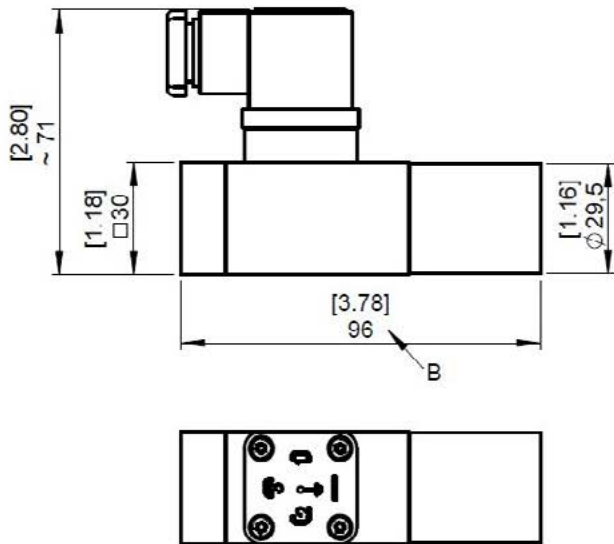
* 90° offset process connection on request

Compact-Pressure Switch

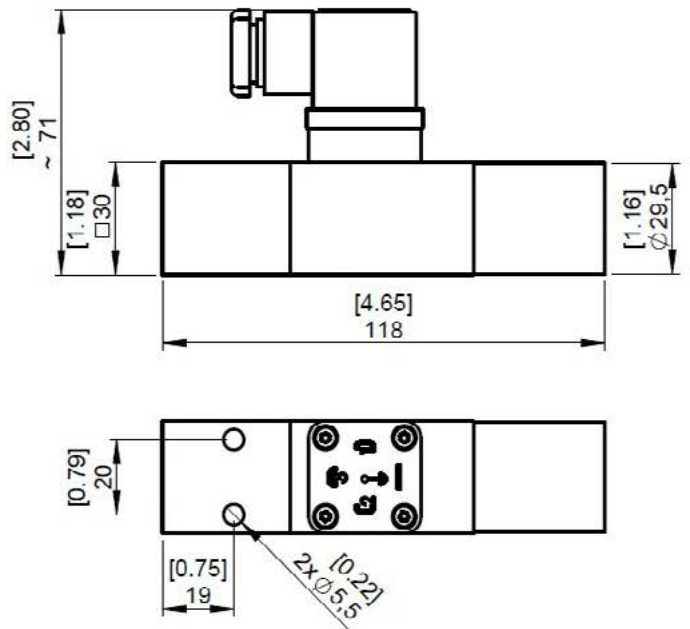
Series 9000

Dimensions (mm / inch)

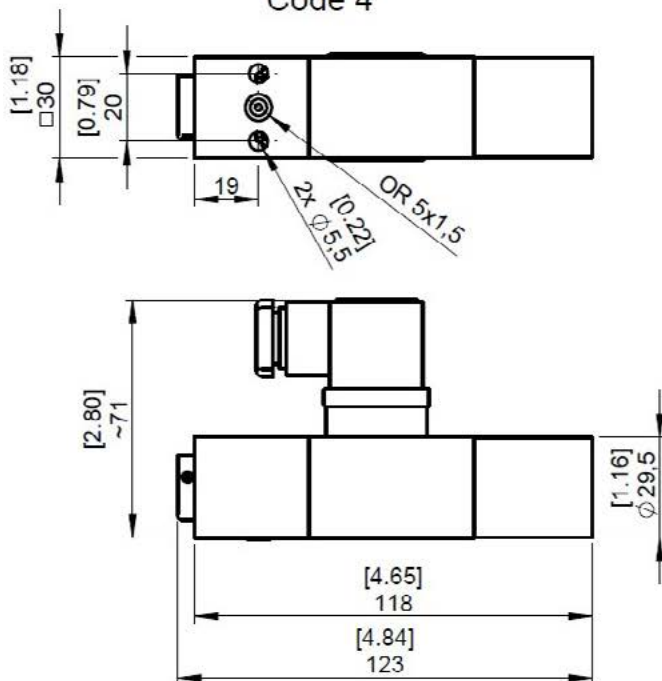
Code 2



Code 3

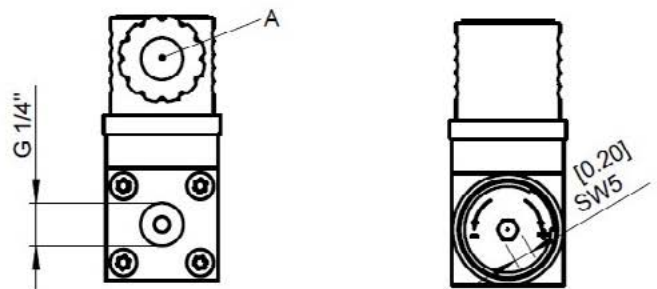


Code 4



Code 2 / Code 3

Code 2 / Code 3 / Code 4



A	Kabel \varnothing 6...8 / Cable \varnothing 0.23...0.31 (Pg 11)
B	Membranversion / diaphragm version L=102 [4.02]

Wiring and connection diagram

930-0130 A

	PL1
C	1
NC	2
NO	3
PE	---

Compact-Pressure Switch

Series 9000

Electrical Ratings

Micro switch	Special features	Volt AC 50/60 Hz	Ind. Last A	Res. Last A	Volt DC	Ind. Last A	Res. Last A	Minimum capacitance
1	Silver contact	250 V ~	2.5	10,0	25 V=	1.0	6.0	20 mA bei 24 VDC

Options

Code	Version
VA	Stainless Steel AISI 303, only for process connection code 3

Approvals

GL	BV, DNV
----	---------

Order Code

Base modell	
9	
	Process connection
2	G1/4" IG DIN ISO 228-1
3	G1/4" IG DIN ISO 228-1 with 2 mounting holes (Ø 5,5mm / 20mm distance)
4	Flange connection, housing only in VA (SS)
	Pressure Ranges, decrease (increasing), bar
02	1.5 ... 14 (2 ... 16) diaphragm version
03	1.5 ... 27 (3 ... 30) diaphragm version
1	6 ... 44 (10 ... 50) piston version
2	15 ... 185 (20 ... 200) piston version
3	35 ... 360 (40 ... 400) piston version
	Micro Switch Contact
1	Silver contact
	Electrical Connection
-PL1	Cube plug DIN EN 175301-803A (IP65)
	Sealing
-B	NBR (fluid temp. range -20°...+80°C)
-E	EPDM (fluid temp. range -40°...+80°C) - not for diaphragm
-V	FKM (fluid temp. range -20°...+80°C) - not for diaphragm
	Options
-VA	Housing 1.4305 (for process connection 3 & 4 only)
	Approvals
-GL	Marine approval

Example

9 3 2 1 -PL1 -B -VA -GL